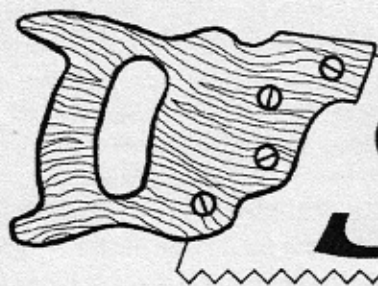


# INTERNATIONAL MUSICAL SAW ASSOCIATION



## SAW PLAYER NEWS

Vol.11, No.2 www.SawPlayers.org Email: Info@SawPlayers.org (415)331-9661 Designer: Ken Ball Summer 2006

### Not For Woodwork... Saws Manufactured for Music



By Natalia 'Saw Lady' Paruz

#### Part One: Made in U.S.A.

It is not a secret that most any hardware store saw plays. Why then, are there saws manufactured especially for making music?

One reason is that people were seeking to improve upon the qualities of the woodwork-tool to make it better suited for music making: making the blade easier to bend, having a finer tone quality, a longer sustain and more notes. The other reason is that saw manufacturing companies were seeking a good advertisement gimmick to create a buzz about their line of saws.

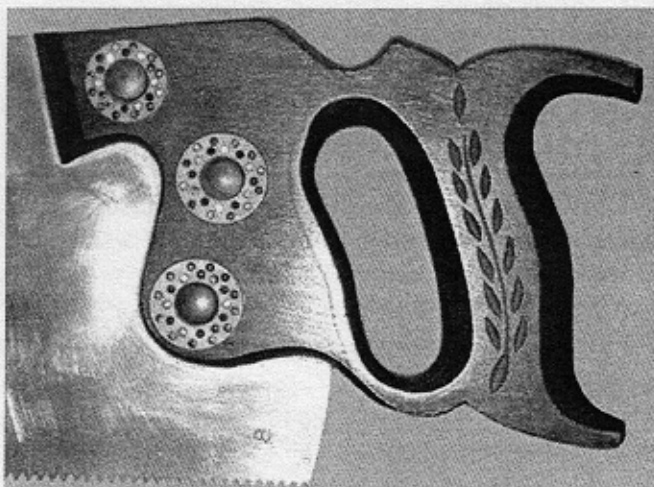
One such company was the **Disston** Company of Pennsylvania. They manufactured a 29.5" long musical saw which was marked: "Henry Disston and Sons, Established 1840 D-8 Philadelphia, For beauty, finish and utility this saw cannot be excelled, Henry Disston. Reg U.S. Pat off Disston Phila"

The **Columbia** musical saw was crafted by the Columbia Saw Works in Indiana, USA in the 1920s. The blade of this 33.5" saw is inscribed with the Company logo "Columbia Saw Works", "Indianapolis, Indiana", "Made in USA" and "Cast Steel - 31 - Warranted". At the handle we find a round brass plate with an eagle inscribed 'Warranted Superior'.

The Disston and the Columbia saws are examples of saws marketed as a musical instrument but not stamped with the word 'musical' on the blade. Most manufacturers stated the saw's purpose in the stamp, such as the **Professional Trophy** musical saw and the **Radio** musical saw, both marked with 'musical saw' on the blade. Some companies went as far as to stamp the blade with pictures depicting music.

The **Broadcasting** musical saw is 26" along the bottom edge and is marked 'Broadcasting Musical Saw' and 'Warranted Superior' with a picture of a microphone printed on the blade.

Some companies even included a carrying case, a bow and an instructional booklet of how to play the saw. The **Tonk Bros. Co.** musical saw was their model #217, measuring 30" in length. It came with a bow, an instruction book and a heavy canvas carrying case for the saw, bow and book. The case has a compartment for the saw, a special compartment for the bow, a two snap storage area for the book and a draw string at the top. The case is lined with soft wool-like material on the inside to protect the saw during transportation and storage.



Close-up of the most coveted of the Mussehl & Westphal saws is the one which was discontinued in the 1950s - the gold plated saw. Originally copper and then 14-karat gold-plated with rhinestones inserted in celluloid washers surrounding the gold plated bolts that hold the handle to the blade and a mahogany handle.

